



**Auswahl von Schalldämpfern in
Akustikdesign-Produkten**



Welcome Test user



Klicken Sie auf Produkte, um ein neues Projekt zu erstellen

Products



Select and configure noise control product without conducting a duct analysis.

Analysis



Analyze a duct system for noise levels in occupied spaces.

Projects



Create or open a project in your account for duct analysis or product selection.

Recent Projects

Project Name	Type	Revision	Created	Last Edited ▾
--------------	------	----------	---------	---------------

Need help?



Contact your local Swegon representative for assistance.
<https://www.swegon.com/contact/>

Select project...

Projects

Search lastEdited Anytime showRevisions No ownedBy Me

” Klicken Sie auf
"Neues Projekt"



New Project

Select project...

Projects

Search lastEdited Anytime

Project Name

AHU project 123 Outdoor

AHU project 123

New Project

Project Name

AHU Silencer

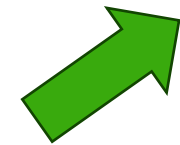
Cancel Create

Owner Editor

Test user Test user ...

Test user Test user ...

New Project Cancel



Geben Sie ihm
einen Namen und
klicken Sie auf "Erstellen"

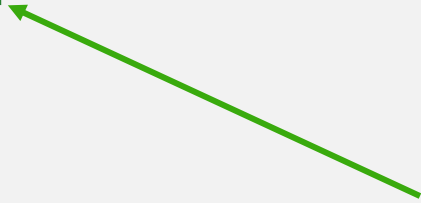
☰ Silencers 123

Swegon Silencers

Noise Control

View	System	Tag	W (mm)	H (mm)	Dia (mm)	I+U	L (mm)	I/s	m/s	Pa	63	125	250	500	1k	2k	4k	8k	Weight (kg)	Model
------	--------	-----	--------	--------	----------	-----	--------	-----	-----	----	----	-----	-----	-----	----	----	----	----	-------------	-------

Add new



Klicken Sie auf Neu hinzufügen, um den Konfigurator zu öffnen.

Silencer Selection

Geben Sie dem Schalldämpfer immer ein Etikett

Identity

Tag Quantity

Tag is required

Dimensions & Airflow

Shape

Duct Width mm Duct Height mm

Max Length mm

Silencer Flow Rate l/s Velocity m/s

Maximum Pressure Drop Pa

System Effects

Silencer Inlet Condition

Diameter from Silencer Transition Length

Required Insertion Loss

Frequency	dBA	63	125	250	500	1k	2k	4k	8k
Sound Before Attenuator	7	0	0	0	0	0	0	0	0
Required Insertion Loss	7	-	-	-	-	-	-	-	-
Calculated Insertion Loss		0	0	0	0	0	0	0	0
Safety Factor		0	0	0	0	0	0	0	0

Silencer Selection

Model	Octave Midband Frequency, Hz											
	L	PD	w/SE	A	63	125	250	500	1k	2k	4k	8k
MORENDO a-0151-150-150-650	650	0	0		3	7	15	25	34	34	21	17
Generated Noise					<10	<10	<10	<10	<10	<10	<10	<10
End Result				7	2	1	0	0	0	0	0	0

Options

Uninsulated Cleaning Cover

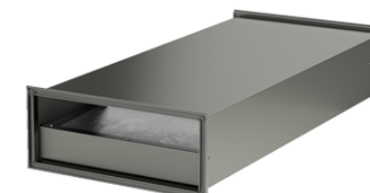
Fire-Resistant Insulated Cleaning Cover

- Insulated 50mm Stone Wool
- Perforated Sheet Metal Lining
- Flange Connection

Resources

- Product Sheet [Rectangular sound attenuator with low build-in heights](#)
- Brochure [Acoustics Overview](#)
- Instruction [Installation, commissioning, maintenance](#)
- Quality [Approval 2706/92, Duct insulation](#)
- [Building product declaration](#)

Image



Silencer Selection

Identity

Tag: Silencer 123 Quantity: 1

Dimensions & Airflow

Shape: **Rectangular**

- Rectangular
- Rectangular/CADENZA
- Rectangular/CALMO
- Rectangular/FACILE
- Rectangular/MORENDO
- Rectangular Elbow
- Rectangular Elbow/LENTO
- Rectangular Elbow/LARGO
- Circular
- Circular/CLA-A
- Circular/CLA-B
- Circular/SORDO-A
- Circular/SORDO-B
- Circular/SORDO-C
- Circular/SORDO-P
- Circular/SORDO-PF
- Acoustical Louver
- Acoustical Louver/ALD

87.18 Pa

System Effects

Silencer Inlet Condition: Ideal Outlet Conditions - 3 to 4 diameters of straight duct

Diameter from Silencer: 0 Transition Length:

Required Insertion Loss

Frequency	dBA	63	125	250	500	1k	2k	4k	8k
Sound Before Attenuator	7	0	0	0	0	0	0	0	0
Required Insertion Loss	7	-	-	-	-	-	-	-	-
Calculated Insertion Loss		0	0	0	0	0	0	0	0
Safety Factor		0	0	0	0	0	0	0	0

Silencer Selection

Model	Octave Midband Frequency, Hz											
	L	PD	w/SE	A	63	125	250	500	1k	2k	4k	8k
MORENDO a-0151-150-150-650	650	0	0		3	7	15	25	34	34	21	17
Generated Noise					<10	<10	<10	<10	<10	<10	<10	<10
End Result				7	2	1	0	0	0	0	0	0

Options

Uninsulated Cleaning Cover: None

Fire-Resistant Insulated Cleaning Cover: None

Insulated 50mm Stone Wool

Perforated Sheet Metal Lining

Flange Connection

Resources

Product Sheet
[Rectangular sound attenuator with low build-in heights](#)

Brochure
[Acoustics Overview](#)

Instruction
[Installation, commissioning, maintenance](#)

Quality
[Approval 2706/92, Duct insulation](#)
[Building product declaration](#)

Image

Wählen Sie die Form, um alle Produkte mit diese Form oder ein Produkt, wenn Sie bereits wissen, welche zu verwenden sind.

Silencer Selection

Wählen Sie die Kanalabmessungen und Ihre maximale Länge für einen Schalldämpfer)

Identity

Tag: Silencer 123 Quantity: 1

Dimensions & Airflow

Shape: Rectangular

Duct Width: 1600 mm Duct Height: 800 mm

Max Length: 1250 mm

Silencer Flow Rate: 0 l/s Velocity: 0 m/s

Maximum Pressure Drop: 87.18 Pa

System Effects

Silencer Inlet Condition: Ideal Outlet Conditions - 3 to 4 diameters of straight duct

Diameter from Silencer: 0 Transition Length:

Required Insertion Loss

Frequency	dB(A)	63	125	250	500	1k	2k	4k	8k
Sound Before Attenuator	7	0	0	0	0	0	0	0	0
Required Insertion Loss	7	-	-	-	-	-	-	-	-
Calculated Insertion Loss		0	0	0	0	0	0	0	0
Safety Factor		0	0	0	0	0	0	0	0

Silencer Selection

Model	L	PD	w/SE	A	Octave Midband Frequency, Hz							
					63	125	250	500	1k	2k	4k	8k
CALMO a-1611-1600-800-650	650	0	0		5	10	15	23	27	27	15	10
Generated Noise					<10	<10	<10	<10	<10	<10	<10	<10
End Result				7	1	0	0	0	0	0	0	0
FACILE a-1610-1600-800-750	750	0	0		3	7	12	18	26	25	15	11
Generated Noise					<10	<10	<10	<10	<10	<10	<10	<10
End Result				7	2	1	0	0	0	0	0	0
CADENZA a-1627-1600-800-1250	1250	0	0		5	11	18	27	32	22	13	12
Generated Noise					<10	<10	<10	<10	<10	<10	<10	<10
End Result				7	1	0	0	0	0	0	0	0
CADENZA a-1628-1600-800-1250	1250	0	0		7	12	21	33	39	33	18	14
Generated Noise					<10	<10	<10	<10	<10	<10	<10	<10
End Result				7	1	0	0	0	0	0	0	0
CALMO a-1621-1600-800-1250	1250	0	0		7	15	24	39	45	40	23	17
Generated Noise					<10	<10	<10	<10	<10	<10	<10	<10
End Result				7	1	0	0	0	0	0	0	0
CALMO a-1622-1600-800-1250	1250	0	0		4	9	16	21	25	18	11	11
Generated Noise					<10	<10	<10	<10	<10	<10	<10	<10
End Result				7	1	1	0	0	0	0	0	0

Options

Uninsulated Cleaning Cover: None

Fire-Resistant Insulated Cleaning Cover: None

Insulated 50mm Stone Wool

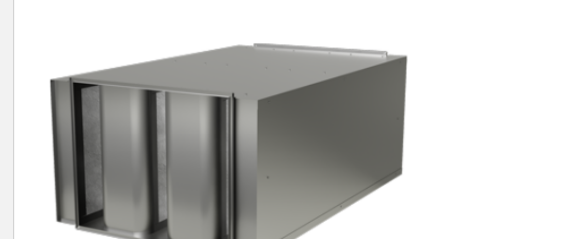
Perforated Sheet Metal Lining

Flange Connection

Resources

- Product Sheet: [Attenuator with recessed connection for rectangular ducts](#)
- Brochure: [Acoustics Overview](#)
- Instruction: [Installation, commissioning, maintenance](#)
- Quality: [Approval 2706/92, Duct insulation](#)
- [Building product declaration](#)

Image



Silencer Selection

Schreiben Sie den aktuellen Luftstrom

Identity

Tag: Silencer 123 Quantity: 1

Dimensions & Airflow

Shape: Rectangular

Duct Width: 1600 mm Duct Height: 800 mm

Max Length: 1250 mm

Silencer Flow Rate Velocity: 2.34 m/s
 3000 l/s

Maximum Pressure Drop: 87.18 Pa

System Effects

Silencer Inlet Condition: Ideal Outlet Conditions - 3 to 4 diameters of straight duct

Diameter from Silencer: 0 Transition Length:

Required Insertion Loss

Frequency	dBA	63	125	250	500	1k	2k	4k	8k
Sound Before Attenuator	7	0	0	0	0	0	0	0	0
Required Insertion Loss	7	-	-	-	-	-	-	-	-
Calculated Insertion Loss		0	0	0	0	0	0	0	0
Safety Factor		0	0	0	0	0	0	0	0

Silencer Selection

Model	L	PD	w/SE	A	Octave Midband Frequency, Hz							
					63	125	250	500	1k	2k	4k	8k
CALMO a-1611-1600-800-650	650	6	6		5	10	15	23	27	27	15	10
Generated Noise					28	28	24	22	19	16	15	13
End Result				25	28	28	24	22	19	16	15	13
FACILE a-1610-1600-800-750	750	11	11		3	7	12	18	26	25	15	11
Generated Noise					20	20	16	14	11	<10	<10	<10
End Result				17	20	20	16	14	11	8	7	5
CALMO a-1622-1600-800-1250	1250	3	3		4	9	16	21	25	18	11	11
Generated Noise					11	11	<10	<10	<10	<10	<10	<10
End Result				8	11	11	7	5	2	0	0	0
CADENZA a-1627-1600-800-1250	1250	7	7		5	11	18	27	32	22	13	12
Generated Noise					17	17	13	11	<10	<10	<10	<10
End Result				14	17	17	13	11	8	5	4	2
CALMO a-1621-1600-800-1250	1250	7	7		7	15	24	39	45	40	23	17
Generated Noise					28	28	24	22	19	16	15	13
End Result				25	28	28	24	22	19	16	15	13
CADENZA a-1628-1600-800-1250	1250	9	9		7	12	21	33	39	33	18	14
Generated Noise					23	23	19	17	14	11	10	<10
End Result				20	23	23	19	17	14	11	10	8

Options

Uninsulated Cleaning Cover: None

Fire-Resistant Insulated Cleaning Cover: None

Insulated 50mm Stone Wool

Perforated Sheet Metal Lining

Flange Connection

Resources

Product Sheet
[Attenuator with recessed connection for rectangular ducts](#)

Brochure
[Acoustics Overview](#)

Instruction
[Installation, commissioning, maintenance](#)

Quality
[Approval 2706/92, Duct insulation](#)
[Building product declaration](#)

Image

Geschwindigkeit im Kanal

Silencer Selection

Identity

Tag: Silencer 123 Quantity: 1

Dimensions & Airflow

Shape: Rectangular

Duct Width: 1600 mm Duct Height: 800 mm

Max Length: 1250 mm

Silencer Flow Rate: 5000 l/s Velocity: 3.91 m/s

Maximum Pressure Drop: 5 Pa

System Effects

Silencer Inlet Condition: Ideal Outlet Conditions - 3 to 4 diameters of straight duct

Diameter from Silencer: 0 Transition Length:

Required Insertion Loss

Frequency	dBA	63	125	250	500	1k	2k	4k	8k
Sound Before Attenuator	92	89	88	88	87	86	85	84	82
Required Insertion Loss	7	-	-	-	-	-	-	-	-
Calculated Insertion Loss		0	0	0	0	0	0	0	0
Safety Factor		0	0	0	0	0	0	0	0

Silencer Selection

Model	Octave Midband Frequency, Hz											
	L	PD	w/SE	A	63	125	250	500	1k	2k	4k	8k
No silencers found matching your parameters												

Options

Please select a silencer to configure options

Wenn es keinen Schalldämpfer gibt, der den Parametern entspricht,
 1. Prüfen Sie, ob der maximale Druckabfall zu niedrig eingestellt ist, erhöhen Sie den Wert auf 50 Pa oder höher.
 2. Die Durchflussrate ist für die Kanalabmessung zu hoch, versuchen Sie es mit einer größeren Kanalabmessung.

Silencer Selection Wenn Sie die Schalleistung (Lw) im Kanal kennen, schreiben Sie sie hier für jedes Oktavband

Identity

Tag: Silencer 123 Quantity: 1

Dimensions & Airflow

Shape: Rectangular

Duct Width: 1600 mm Duct Height: 800 mm

Max Length: 1250 mm

Silencer Flow Rate: 3000 l/s Velocity: 2.34 m/s

Maximum Pressure Drop: 87.18 Pa

System Effects

Silencer Inlet Condition: Ideal Outlet Conditions - 3 to 4 diameters of straight duct

Diameter from Silencer: 0 Transition Length:

Required Insertion Loss

Frequency	dBA	63	125	250	500	1k	2k	4k	8k
Sound Before Attenuator	92	89	88	88	87	86	85	84	82
Required Insertion Loss	7	-	-	-	-	-	-	-	-
Calculated Insertion Loss		0	0	0	0	0	0	0	0
Safety Factor		0	0	0	0	0	0	0	0

Silencer Selection

Model	L	PD	w/SE	A	Octave Midband Frequency, Hz							
					63	125	250	500	1k	2k	4k	8k
CALMO α-1611-1600-800-650	650	6	6		5	10	15	23	27	27	15	10
Generated Noise					28	28	24	22	19	16	15	13
End Result				75	84	78	73	64	59	58	69	72
FACILE α-1610-1600-800-750	750	11	11		3	7	12	18	26	25	15	11
Generated Noise					20	20	16	14	11	<10	<10	<10
End Result				75	86	81	76	69	60	60	69	71
CALMO α-1622-1600-800-1250	1250	3	3		4	9	16	21	25	18	11	11
Generated Noise					11	11	<10	<10	<10	<10	<10	<10
End Result				77	85	79	72	66	61	67	73	71
CADENZA α-1627-1600-800-1250	1250	7	7		5	11	18	27	32	22	13	12
Generated Noise					17	17	13	11	<10	<10	<10	<10
End Result				75	84	77	70	60	54	63	71	70
CALMO α-1621-1600-800-1250	1250	7	7		7	15	24	39	45	40	23	17
Generated Noise					28	28	24	22	19	16	15	13
End Result				67	82	73	64	48	41	45	61	65
CADENZA α-1628-1600-800-1250	1250	9	9		7	12	21	33	39	33	18	14
Generated Noise					23	23	19	17	14	11	10	<10
End Result				71	82	76	67	54	47	52	66	68

Options

Uninsulated Cleaning Cover: None

Fire-Resistant Insulated Cleaning Cover: None

Insulated 50mm Stone Wool

Perforated Sheet Metal Lining

Flange Connection

Resources

Product Sheet: [Attenuator with recessed connection for rectangular ducts](#)

Brochure: [Acoustics Overview](#)

Instruction: [Installation, commissioning, maintenance](#)

Quality: [Approval 2706/92_Duct insulation](#)
[Building product declaration](#)

Image

Silencer Selection

Schalleistung (Lw) im Kanal vor dem Schalldämpfer in dB(A)^x

Identity

Tag: Silencer 123 Quantity: 1

Dimensions & Airflow

Shape: Rectangular

Duct Width: 1600 mm Duct Height: 800 mm

Max Length: 1250 mm

Silencer Flow Rate: 3000 l/s Velocity: 2.34 m/s

Maximum Pressure Drop: 87.18 Pa

System Effects

Silencer Inlet Condition: Ideal Outlet Conditions - 3 to 4 diameters of straight duct

Diameter from Silencer: 0 Transition Length:

Required Insertion Loss

Frequency	63	125	250	500	1k	2k	4k	8k	
Sound Before Attenuator	92	89	88	88	87	86	85	84	82
Required Insertion Loss	7	-	-	-	-	-	-	-	-
Calculated Insertion Loss	0	0	0	0	0	0	0	0	0
Safety Factor	0	0	0	0	0	0	0	0	0

Silencer Selection

Model	L	PD	w/SE	A	Octave Midband Frequency, Hz							
					63	125	250	500	1k	2k	4k	8k
CALMO a-1611-1600-800-650	650	6	6		5	10	15	23	27	27	15	10
Generated Noise					28	28	24	22	19	16	15	13
End Result				75	84	78	73	64	59	58	69	72
FACILE a-1610-1600-800-750	750	11	11		3	7	12	18	26	25	15	11
Generated Noise					20	20	16	14	11	<10	<10	<10
End Result				75	86	81	76	69	60	60	69	71
CALMO a-1622-1600-800-1250	1250	3	3		4	9	16	21	25	18	11	11
Generated Noise					11	11	<10	<10	<10	<10	<10	<10
End Result				77	85	79	72	66	61	67	73	71
CADENZA a-1627-1600-800-1250	1250	7	7		5	11	18	27	32	22	13	12
Generated Noise					17	17	13	11	<10	<10	<10	<10
End Result				75	84	77	70	60	54	63	71	70
CALMO a-1621-1600-800-1250	1250	7	7		7	15	24	39	45	40	23	17
Generated Noise					28	28	24	22	19	16	15	13
End Result				67	82	73	64	48	41	45	61	65
CADENZA a-1628-1600-800-1250	1250	9	9		7	12	21	33	39	33	18	14
Generated Noise					23	23	19	17	14	11	10	<10
End Result				71	82	76	67	54	47	52	66	68

Options

Uninsulated Cleaning Cover: None

Fire-Resistant Insulated Cleaning Cover: None

Insulated 50mm Stone Wool

Perforated Sheet Metal Lining

Flange Connection

Resources

Product Sheet
[Attenuator with recessed connection for rectangular ducts](#)

Brochure
[Acoustics Overview](#)

Instruction
[Installation, commissioning, maintenance](#)

Quality
[Approval 2706/92, Duct insulation](#)
[Building product declaration](#)

Image

Sound power in duct after silencer in dB(A)

Silencer Selection

Shape: Rectangular

Duct Width: 1600 mm, Duct Height: 800 mm

Max Length: 1250 mm

Silencer Flow Rate: 3000 l/s, Velocity: 2.34 m/s

Maximum Pressure Drop: 87.18 Pa

System Effects

Silencer Inlet Condition:

- Ideal Outlet Conditions - 3 to 4 diameters of straight duct
- Transition - 7.5 degrees per side
- Transition - 25 degrees per side
- Transition - 45 degrees per side
- Radius Elbow with no turning vanes
- Mitered Elbow with short turning vanes
- Mitered Elbow with no turning vanes
- Abrupt Entry or Exit, Smooth Inlet or Discharge
- Abrupt Entry or Exit, Sharp Inlet or Discharge
- Centrifugal Fan
- Axial Fan
- Coils or Filters

Safety Factor: 0 0 0 0 0 0 0 0

Silencer Selection

Model	Octave Midband Frequency, Hz											
	L	PD	w/SE	A	63	125	250	500	1k	2k	4k	8k
CALMO a-1611-1600-800-650 Generated Noise End Result	650	6	6		5	10	15	23	27	27	15	10
				75	84	78	73	64	59	58	69	72
FACILE a-1610-1600-800-750 Generated Noise End Result	750	11	11		3	7	12	18	26	25	15	11
				75	86	81	76	69	60	60	69	71
CALMO a-1622-1600-800-1250 Generated Noise End Result	1250	3	3		4	9	16	21	25	18	11	11
				77	85	79	72	66	61	67	73	71
CADENZA a-1627-1600-800-1250 Generated Noise End Result	1250	7	7		5	11	18	27	32	22	13	12
				75	84	77	70	60	54	63	71	70
CALMO a-1621-1600-800-1250 Generated Noise End Result	1250	7	7		7	15	24	39	45	40	23	17
				67	82	73	64	48	41	45	61	65
CADENZA a-1628-1600-800-1250 Generated Noise End Result	1250	9	9		7	12	21	33	39	33	18	14
				71	82	76	67	54	47	52	66	68

None

Insulated 50mm Stone Wool

Perforated Sheet Metal Lining

Flange Connection

Resources

Product Sheet
[Attenuator with recessed connection for rectangular ducts](#)

Brochure
[Acoustics Overview](#)

Instruction
[Installation, commissioning, maintenance](#)

Quality
[Approval 2706/92, Duct insulation](#)
[Building product declaration](#)

Image

Wählen Sie den aktuellen Zustand vor und nach dem Schalldämpfer

Silencer Selection

Shape: Rectangular

Duct Width: 1600 mm, Duct Height: 800 mm

Max Length: 1250 mm

Silencer Flow Rate: 3000 l/s, Velocity: 2.34 m/s

Maximum Pressure Drop: 87.18 Pa

Aktueller Systemeffekt

System Effects

Silencer Inlet Condition: Axial Fan

Diameter from Silencer: 0, Transition Length: [empty]

Silencer Outlet Condition: Radius Elbow with no turning vanes

Diameter from Silencer: 0, Transition Length: [empty]

Safety Factor: 0 0 0 0 0 0 0 0 0

Silencer Selection

Model	L	PD	w/SE	A	Octave Midband Frequency, Hz							
					63	125	250	500	1k	2k	4k	8k
CALMO α-1611-1600-800-650 Generated Noise End Result	650	6	12 +9	75	5 28	10 28	15 24	23 22	27 19	27 16	15 15	10 13
FACILE α-1610-1600-800-750 Generated Noise End Result	750	11	23 +9	75	3 20	7 20	12 16	18 14	26 11	25 <10	15 <10	11 <10
CALMO α-1622-1600-800-1250 Generated Noise End Result	1250	3	7 +9	77	4 11	9 11	16 <10	21 <10	25 <10	18 <10	11 <10	11 <10
CADENZA α-1627-1600-800-1250 Generated Noise End Result	1250	7	14 +9	75	5 17	11 17	18 13	27 11	32 <10	22 <10	13 <10	12 <10
CALMO α-1621-1600-800-1250 Generated Noise End Result	1250	7	14 +9	67	7 28	15 28	24 24	39 22	45 19	40 16	23 15	17 13
CADENZA α-1628-1600-800-1250 Generated Noise End Result	1250	9	19 +9	71	7 23	12 23	21 19	33 17	39 14	33 11	18 10	14 <10

Druckabfall bei idealen Bedingungen
(gerader Kanal mit 3 bis 4 Durchmessern vor und nach dem Schalldämpfer)

Druckabfall mit
aktuelle Systemeffekte

None

Insulated 50mm Stone Wool

Perforated Sheet Metal Lining

Flange Connection

Resources

Product Sheet
[Attenuator with aerodynamically shaped splitters](#)

Brochure
[Acoustics Overview](#)

Instruction
[Installation, commissioning, maintenance](#)

Quality
[Building product declaration](#)
[Approval 2706/92, Duct insulation](#)

Image

Silencer Selection

Identity

Tag: Silencer 123 Quantity: 1

Dimensions & Airflow

Shape: Rectangular

Duct Width: 1600 mm Duct Height: 800 mm

Max Length: 1250 mm

Silencer Flow Rate: 3000 l/s Velocity: 2.34 m/s

Maximum Pressure Drop: 87.18 Pa

System Effects

Silencer Inlet Condition: Axial Fan

Diameter from Silencer: 0 Transition Length:

Required Insertion Loss

Frequency	dBA	63	125	250	500	1k	2k	4k	8k
Sound Before Attenuator	92	89	88	88	87	86	85	84	82
Required Insertion Loss	7	-	-	-	-	-	-	-	-
Calculated Insertion Loss		0	0	0	0	0	0	0	0
Safety Factor		0	0	0	0	0	0	0	0

Silencer Selection

Model	Octave Midband Frequency, Hz											
	L	PD	w/SE	A	63	125	250	500	1k	2k	4k	8k
CALMO a-1611-1600-800-650	650	6	12		5	10	15	23	27	27	15	10
Generated Noise			+9		28	28	24	22	19	16	15	13
End Result				75	84	78	73	64	59	58	69	72
FACILE a-1610-1600-800-750	750	11	23		3	7	12	18	26	25	15	11
Generated Noise			+9		20	20	16	14	11	<10	<10	<10
End Result				75	86	81	76	69	60	60	69	71
CALMO a-1622-1600-800-1250	1250	3	7		4	9	16	21	25	18	11	11
Generated Noise			+9		11	11	<10	<10	<10	<10	<10	<10
End Result				77	85	79	72	66	61	67	73	71
CADENZA a-1627-1600-800-1250	1250	7	14		5	11	18	27	32	22	13	12
Generated Noise			+9		17	17	13	11	<10	<10	<10	<10
End Result				75	84	77	70	60	54	63	71	70
CALMO a-1621-1600-800-1250	1250	7	14		7	15	24	39	45	40	23	17
Generated Noise			+9		28	28	24	22	19	16	15	13
End Result				67	82	73	64	48	41	45	61	65
CADENZA a-1628-1600-800-1250	1250	9	19		7	12	21	33	39	33	18	14
Generated Noise			+9		23	23	19	17	14	11	10	<10
End Result				71	82	76	67	54	47	52	66	68

Options

Uninsulated Cleaning Cover: None

Fire-Resistant Insulated Cleaning Cover: None

Insulated 50mm Stone Wool

Perforated Sheet Metal Lining

Flange Connection

Resources

- Product Sheet: [Attenuator with recessed connection for rectangular ducts](#)
- Brochure: [Acoustics Overview](#)
- Instruction: [Installation, commissioning, maintenance](#)
- Quality: [Approval 2706/92, Duct insulation](#)
- [Building product declaration](#)

Image



Cancel Create



Klicken Sie auf den Schalldämpfer, den Sie aus der Liste auswählen, und klicken Sie auf Erstellen

Das ausgewählte Produkt wird der Liste hinzugefügt

★ Silencers 123

Swegon Silencers

Noise Control Edit Löschen

	View	System	Tag	W (mm)	H (mm)	Dia (mm)	I+U	L (mm)	l/s	m/s	Pa	63	125	250	500	1k	2k	4k	8k	Weight (kg)	Model
 			Silencer 123	1600	800			1250	3000	2	7	7 28	15 28	24 24	39 22	45 19	40 16	23 15	17 13	112	CALMO α-1621-1600-800-1250

Add new




Klicken Sie auf Neu hinzufügen, um weitere Schalldämpfer hinzuzufügen

Bewegen Sie den Mauszeiger über Reporting und drücken Sie auf Silencer Submittal für einen detaillierten Schalldämpferausdruck

Silencers 123

Swegon Silencers

Noise Control

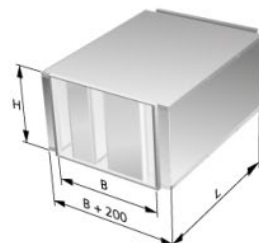
	View	System	Tag	W (mm)	H (mm)	Dia (mm)	I+U	L (mm)	I/s	m/s	Pa	63	125	250	500	1k	2k	4k	8k	Weight (kg)	Model
 			Silencer 123	1600	800			1250	3000	2	7	7 28	15 28	24 24	39 22	45 19	40 16	23 15	17 13	112	CALMO a-1621-1600-800-1250

Add new

Silencer Submittal

Project: Silencers 123

CALMO α-1621-1600-800-1250



Path

Position

Silencer 123

Quick facts

- Included in the MagiCAD database
- Excellent aerodynamic characteristics
- Available with cleaning cover
- Available in an insulated version with 50 mm thick fire-resistant stone wool
- Connection sizes ranging from 400x300 to 2200x2200
- Remarkably space-saving rectangular sound attenuator
- Extremely low pressure drop via tapered acoustic baffle surfaces
- Type-approved, environmentally friendly sound attenuating material, ISOVER Cleantec® PLUS
- ISOVER Cleantec® PLUS is cleanable using a wet method.

General

- The CALMO is, due to its unique design with connections facing the side baffles, suitable for use both in ducts and in direct connection to ventilation units.

Dimensions

Width, B	1600mm
Height, H	800mm
Length, L	1250mm
Weight	111.57kg

Data

Inlet	Axial Fan
Outlet	Radius Elbow with no turning vanes
Air flow/l/s	3000
Velocity(m/s)	2
Pressure drop(Pa)	14

Frequency band	63	125	250	500	1k	2k	4k	8k	Sum db(A)
Lw before attenuator	89	88	88	87	86	85	84	82	92
Attenuation (Ld)	7	15	24	39	45	40	23	17	
Sound generation (Lw)	28	28	24	22	19	16	15	13	
Lw after attenuator	82	73	64	48	41	45	61	65	67

Produktname

CALMO α-1621-1600-800-1250

Tag

Position

Silencer 123

Quick Facts

Abmessungen und Gewicht

Dimensions

Width, B	1600mm
Height, H	800mm
Length, L	1250mm
Weight	111.57kg

Druckabfall bei Aktuelle Systemeffekte und Luft- Geschwindigkeit













Schall- Berechnung

Bewegen Sie den Mauszeiger über "Berichte" und klicken Sie auf "Schalldämpferzeitplan" für einen Ausdruck der unten aufgeführten Schalldämpfer

★ Silencers 123

Swegon Silencers

Noise Control

	View	System	Tag	W (mm)	H (mm)	Dia (mm)	I+U	L (mm)	I/s	m/s	Pa	63	125	250	500	1k	2k	4k	8k	Weight (kg)	Model
 			Silencer 1	1600	800			1250	3000	2	7	7 28	15 28	24 24	39 22	45 19	40 16	23 15	17 13	112	CALMO a-1621-1600-800-1250
 			Silencer 2	236	177	125		1000	100	8	19	7 27	16 27	23 23	39 21	50 18	50 15	47 14	35 12	7	CLA-A-125-1000
 			Silencer 3	1000	400		300	1300	1300	3	30	8 22	16 22	26 18	31 16	42 13	34 <10	23 <10	23 <10	48	LENTO a-1032-1000-400-300
 			Silencer 4	2000	1200			1950	8000	3	24	5 20	11 20	27 16	39 14	39 11	34 <10	24 <10	17 <10	472	FACILE a-2030-2000-1200-1950

Add new

Silencer Schedule

Project: Silencers 123

Tag	Model	Dia/WxH (mm)	L/I+U (mm)	Weight (kg)	I/s	Pa	63	125	250	500	1k	2k	4k	8k	
Silencer 1	CALMO a-1621-1600-800-1250	1600 x 800	1250	111.57	3000	7	Lw	28	28	24	22	19	16	15	13
							Ld	7	15	24	39	45	40	23	17
Silencer 2	CLA-A-125-1000	125	1000	7.2	100	19	Lw	27	27	23	21	18	15	14	12
							Ld	7	16	23	39	50	50	47	35
Silencer 3	LENTO a-1032-1000-400-300	1000 x 400	300	48.35	1300	30	Lw	22	22	18	16	13	<10	<10	<10
							Ld	8	16	26	31	42	34	23	23
Silencer 4	FACILE a-2030-2000-1200-1950	2000 x 1200	1950	472.49	8000	24	Lw	20	20	16	14	11	<10	<10	<10
							Ld	5	11	27	39	39	34	24	17



Tipps und Tricks

Suche nach Schalldämpfer mit der erforderlichen Einfügedämpfung

Silencer Selection

Fügen Sie die erforderliche Einfügedämpfung in der Zeile Berechnete Einfügedämpfung hinzu

Identity

Tag: Silencer 1 Quantity: 1

Dimensions & Airflow

Shape: Rectangular/CALMO

Duct Width: 1600 mm Duct Height: 800 mm

Max Length: 1250 mm

Silencer Flow Rate: 0 l/s Velocity: 0 m/s

Maximum Pressure Drop: 87.18 Pa

System Effects

Silencer Inlet Condition: Ideal Outlet Conditions - 3 to 4 diameters of straight duct

Diameter from Silencer: 0 Transition Length:

Required Insertion Loss

Frequency	dBA	63	125	250	500	1k	2k	4k	8k
Sound Before Attenuator	7	0	0	0	0	0	0	0	0
Required Insertion Loss	29	6	14	18	20	25	24	13	8
Calculated Insertion Loss		6	14	18	20	25	24	13	8
Safety Factor		0	0	0	0	0	0	0	0

Silencer Selection Dieser Schalldämpfer erfüllt die geforderte Einfügedämpfung (alle Abbildungen sind schwarz)

Model	L	PD	w/SE	A	Octave Midband Frequency, Hz							
					63	125	250	500	1k	2k	4k	8k
CALMO a-1621-1600-800-1250	1250	0	0		7	15	24	39	45	40	23	17
Generated Noise					<10	<10	<10	<10	<10	<10	<10	<10
End Result				7	1	0	0	0	0	0	0	0
CALMO a-1611-1600-800-650	650	0	0		5	10	15	23	27	27	15	10
Generated Noise					<10	<10	<10	<10	<10	<10	<10	<10
End Result				7	1	0	0	0	0	0	0	0
CALMO a-1622-1600-800-1250	1250	0	0		4	9	16	21	25	18	11	11
Generated Noise					<10	<10	<10	<10	<10	<10	<10	<10
End Result				7	1	1	0	0	0	0	0	0

Zahlen werden rot angezeigt, wenn sie die Anforderung nicht erfüllen

Options

Unisolated Cleaning Cover: None

Fire-Resistant Insulated Cleaning Cover: None

Insulated 50mm Stone Wool

Perforated Sheet Metal Lining

Flange Connection

Resources

Product Sheet: [Attenuator with recessed connection for rectangular ducts](#)

Brochure: [Acoustics Overview](#)

Instruction: [Installation, commissioning, maintenance](#)

Quality: [Approval 2706/92, Duct insulation](#)
[Building product declaration](#)

Image

Silencer Selection

Identity

Tag Quantity

Tag is required

Dimensions & Airflow

Shape

Duct Width mm Duct Height mm

Max Length mm

Silencer Flow Rate l/s Velocity m/s

Maximum Pressure Drop Pa

System Effects

Silencer Inlet Condition

Diameter from Silencer Transition Length

Required Insertion Loss

Frequency	dBA	63	125	250	500	1k	2k	4k	8k
Sound Before Attenuator	7	0	0	0	0	0	0	0	0
Required Insertion Loss	7	-	-	-	-	-	-	-	-
Calculated Insertion Loss		0	0	0	0	0	0	0	0
Safety Factor		0	0	0	0	0	0	0	0

Silencer Selection

Model	Octave Midband Frequency, Hz											
	L	PD	w/SE	A	63	125	250	500	1k	2k	4k	8k
MORENDO a-0151-150-150-650	650	0	0		3	7	15	25	34	34	21	17
Generated Noise					<10	<10	<10	<10	<10	<10	<10	<10
End Result				7	2	1	0	0	0	0	0	0

Links zu Dokumenten für den ausgewählten Schalldämpfer

Options

Unisulated Cleaning Cover

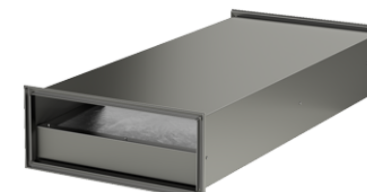
Fire-Resistant Insulated Cleaning Cover

- Insulated 50mm Stone Wool
- Perforated Sheet Metal Lining
- Flange Connection

Resources

- Product Sheet [Rectangular sound attenuator with low build-in heights](#)
- Brochure [Acoustics Overview](#)
- Instruction [Installation, commissioning, maintenance](#)
- Quality [Approval 2706/92_Duct insulation](#)
- [Building product declaration](#)

Image



Cancel

Create

Swegon 

